



STAINLESS STEEL Liquor Display Racks

23" and 26" Wide Units

Item #: _____ Qty #: _____
 Model #: _____
 Project #: _____



**LD-1824
Shown**



**Optional Locking Cover
Available - Includes
Padlock & 2 Keys**

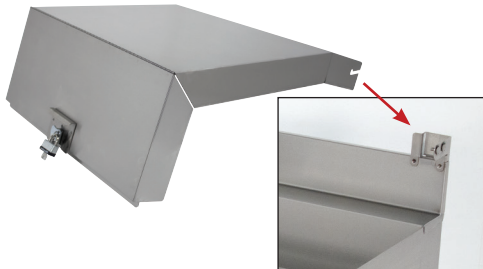
FEATURES:

- Five tiered steps to display liquor bottles.
- Steel straps secure bottles on steps.
- 4" back splash.
- Galvanized legs with adjustable plastic bullet feet.
- Adjustable galvanized side cross-bracing.
- Optional stainless steel cover includes padlock and two keys.
- 26" Wide Units** have rear deck for extra storage

MATERIAL:

- 20 gauge, 300 stainless steel
- Sides:** 14 gauge, 300 stainless steel
- Legs:** 1 5/8" O.D. 18 gauge, galvanized steel with adjustable plastic bullet feet

23" WIDE				26" WIDE				
Model #	Size (W x L x H)	Approx. Weight	Approx. Cu. Ft.	Model #	Size (W x L x H)	Approx. Weight	Approx. Cu. Ft.	Approx. Bottle Capacity
LD-1812	23" x 12" x 33"	30 lbs.	15	LD-2112	26" x 12" x 33"	30 lbs.	15	15
LD-1818	23" x 18" x 33"	35 lbs.	20	LD-2118	26" x 18" x 33"	35 lbs.	20	20
LD-1824	23" x 24" x 33"	40 lbs.	30	LD-2124	26" x 24" x 33"	40 lbs.	30	30



LC Series Covers
Attaches To Factory
Installed Brackets on
Liquor Rack

OPTIONAL STAINLESS STEEL LIQUOR RACK COVERS:

Includes Padlock & Two Keys

- LC-1812** - 18" x 12" removable stainless steel cover
- LC-1818** - 18" x 18" removable stainless steel cover
- LC-1824** - 18" x 24" removable stainless steel cover
- LC-2112** - 21" x 12" removable stainless steel cover
- LC-2118** - 21" x 18" removable stainless steel cover
- LC-2124** - 21" x 24" removable stainless steel cover



Customer Service Available To Assist You 1-800-645-3166 8:30 am - 8:00 pm E.S.T.

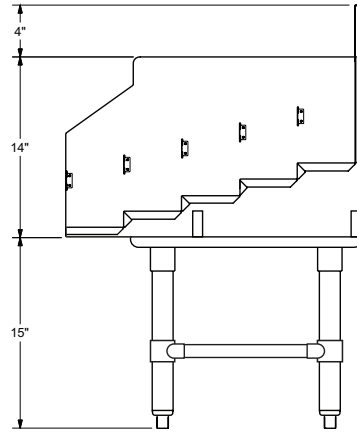
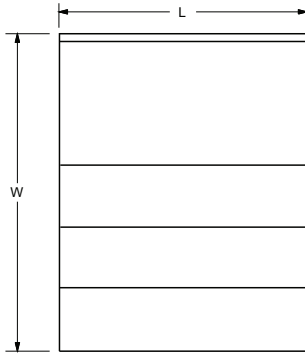
For Orders & Customer Service:
 Email: customer@advancetabco.com or Fax: 631-242-6900

For Smart Fabrication™ Quotes:
 Email: smartfab@advancetabco.com or Fax: 631-586-2933

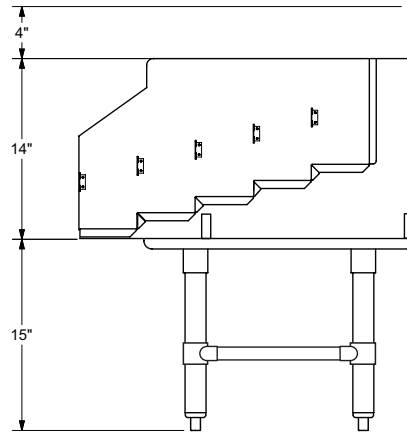
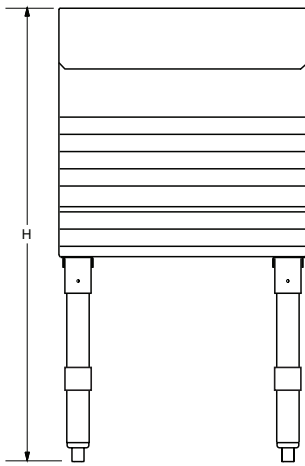
DIMENSIONS and SPECIFICATIONS

TOL Overall: $\pm .500"$ Interior: $\pm .250"$

ALL DIMENSIONS ARE TYPICAL

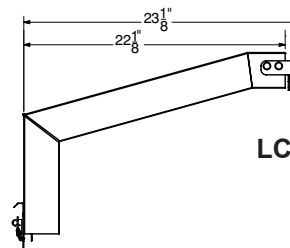
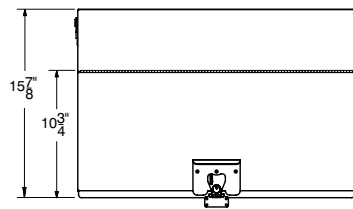
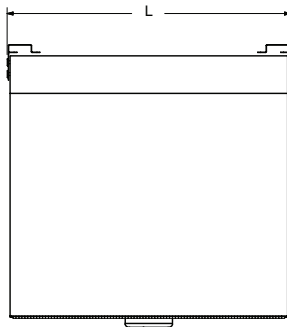


LD-18 Series

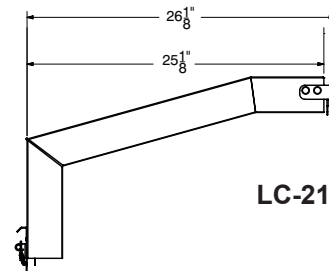


LD-21 Series

Optional Stainless Steel Cover (LC Series)



LC-18 Series



LC-21 Series

